

**SMART VENT**

**877- 441- 8368**

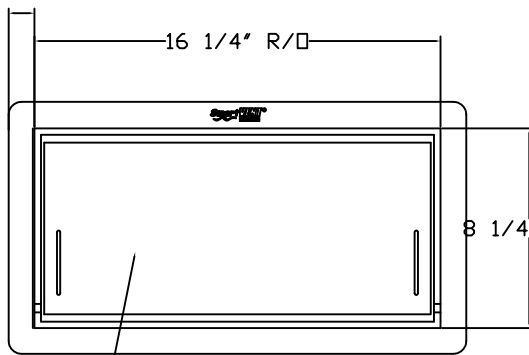
**www.smartvent.com**

# DETAIL DIAGRAM

## MODEL 1540-531-12 and 1540-531-15 (wall thickness)

### INTERIOR TRIM FLANGE & INNER SLEEVE KIT

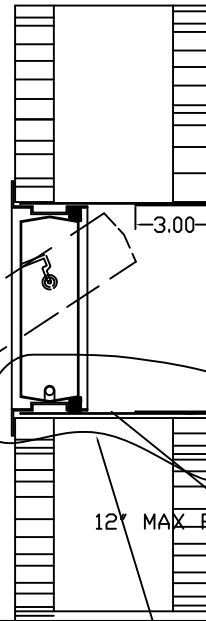
1" FLANGE ALL AROUND



EXTERIOR VIEW

AUTOMATIC FLOOD VENT SHOWN FROM EXTERIOR.  
FOUNDATION FLOOD VENT AS MANUFACTURED  
BY SMART VENT, Inc.

VENT SHOWN OPEN



12\"/>

TRIM FLANGE FINISHES THE INSIDE

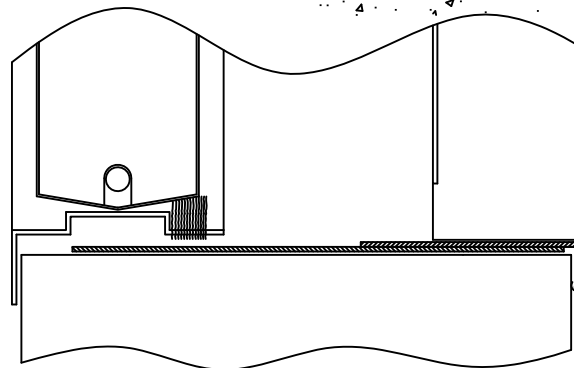
1\"/>



INTERIOR VIEW

STAINLESS STEEL SLEEVE  
AS MANUFACTURED  
BY "SMART VENT" MODEL 1540-531-12 (7\"/>

VIEW "AA"



VIEW "AA"

ENLARGED FOR CLARITY

#### NOTES:

- INSTALL OUR INSULATED MODEL OR DUAL FUNCTION MODEL AS PER INSTALLATION INSTRUCTIONS
- INSERT INNER FINISH SLEEVE THROUGH OPENING FROM THE INSIDE
- ENSURE INNER SLEEVE SLIDES OVER THE FLOOD VENT FLANGE
- USE CONSTRUCTION ADHESIVE AROUND SLEEVE FRAME TO SECURE

TOLERANCES UNLESS  
OTHERWISE SPECIFIED  
X.X +/-0.06  
X.XX +/-0.03  
X.XXX +/-0.005



**SMART VENT®**  
877-441-8368  
WWW.SMARTVENT.COM

SMART VENT Foundation Flood Vents  
450 AndBro Dr., Suite 2B  
Pitman NJ 08071

SMART VENT OR FLOOD VENT  
INTERIOR TRIM FLANGE & INNER SLEEVE KIT  
MODEL 1540-531

THE INFORMATION CONTAINED IN THIS DRAWING  
IS THE SOLE PROPERTY OF SMART VENT, INC.  
IF USED IN PROJECT, CHANGES TO DRAWING  
ARE PROHIBITED WITHOUT THE WRITTEN  
PERMISSION OF SMART VENT, INC.

SIZE A	DWG NO. 1540-531	REV C
DATE: 5-15-09		SHEET 1 OF 1